



Digital Signage System

Installation Guide
Version 3.0

<http://www.iseeboard.com>

Copyright © 2009-2010 LeuSys Technologies Inc. All Rights Reserved.

The specification is subject to change without notice.

Acknowledgments

Copyright Notice

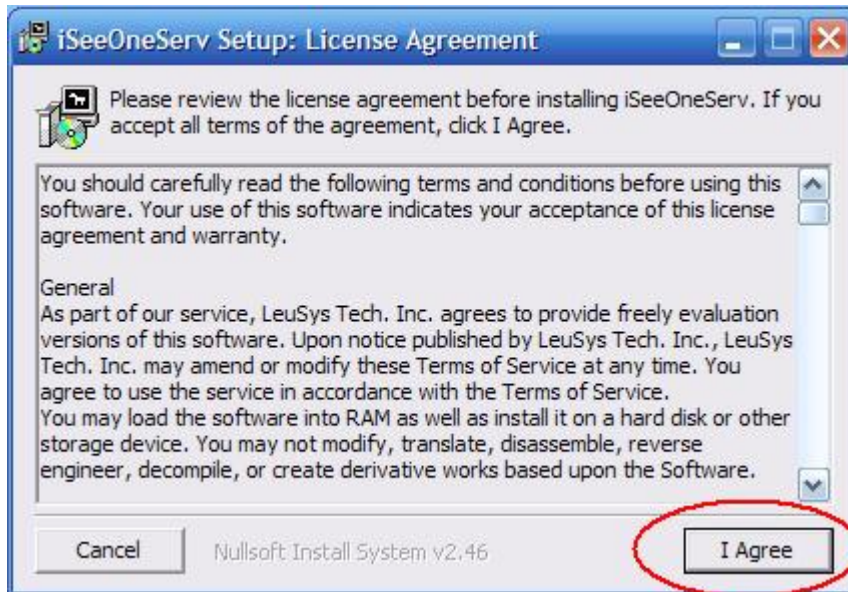
Copyright © 2009-2010 LeuSys Technologies Inc (<http://www.leusys.com>). All Rights Reserved. All the contents in this manual are the intellectual property of LeuSys Technologies Inc. ("LeuSys"). No part of this installation guide, including the products and software described in it, shall be reproduced, transferred, distributed, stored in any form, or translated into any language without the prior written permission of LeuSys. Specifications and information in this manual are subject to change at any time without obligation to notify any person of such revision or changes.

Disclaimers

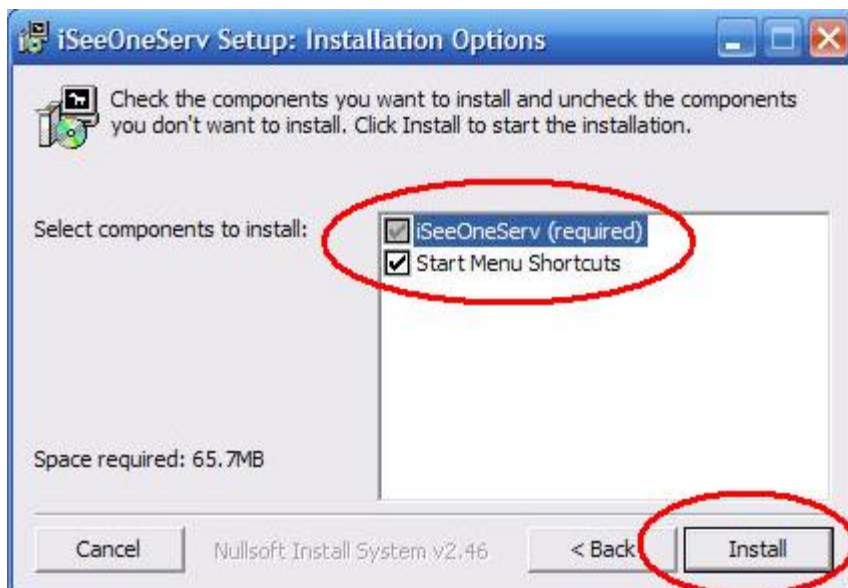
PLEASE READ THIS AGREEMENT CAREFULLY BEFORE USING THE PROGRAM. WE WILL LICENSE THE PROGRAM TO YOU ONLY IF YOU FIRST ACCEPT THE TERMS OF THIS AGREEMENT. BY USING THE PROGRAM YOU AGREE TO THESE TERMS. IF YOU DO NOT AGREE TO THE TERMS OF THIS AGREEMENT, PROMPTLY RETURN THE UNUSED PROGRAM TO THE PARTY (EITHER ORIGINAL SUPPLIER OR ITS RESELLER) FROM WHOM YOU ACQUIRED IT TO RECEIVE A REFUND OF THE AMOUNT YOU PAID. THE PROGRAM IS OWNED BY US, SUPPLIER'S CERTIFICATED THRID PARTY, OR ONE OF SUPPLIER'S DISTRIBUTORS, AND IS COPYRIGHTED AND LICENSED, NOT SOLD. THE TERM "PROGRAM" MEANS THE ORIGINAL PROGRAM AND ALL WHOLE OR PARTIAL COPIES OF IT. A PROGRAM CONSISTS OF MACHINE-READABLE INSTRUCTIONS, ITS COMPONENTS, DATA, AUDIO-VISUAL CONTENT (SUCH AS IMAGES, TEXT, RECORDINGS, OR PICTURES), AND RELATED LICENSED MATERIALS.

iSeeBoard OneServer Installation Guide

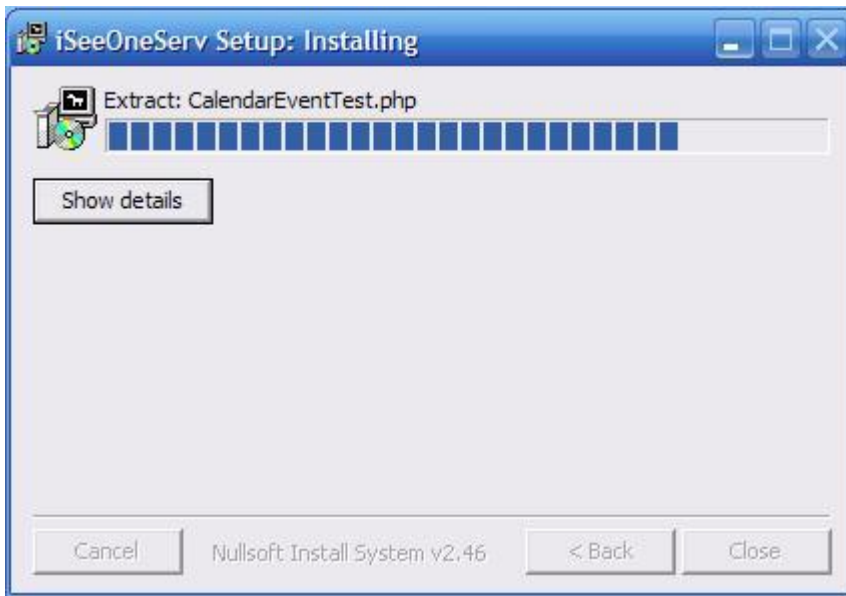
- 1) Insert CD and run iSeeOne-3.0 _Installer.exe
- 2) Read and agree the License



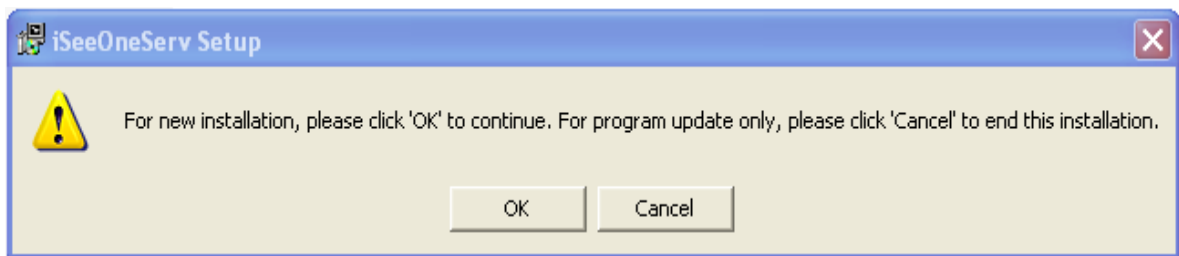
- 3) Mark components iSeeOneServ and Menu Shortcut. Click Install



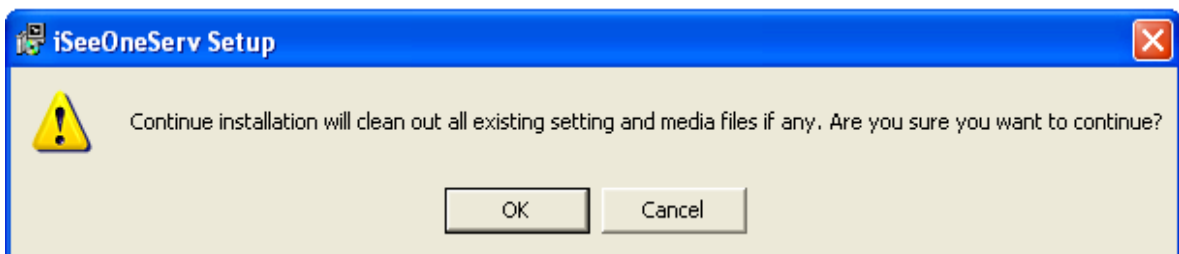
4) System extracts program files...



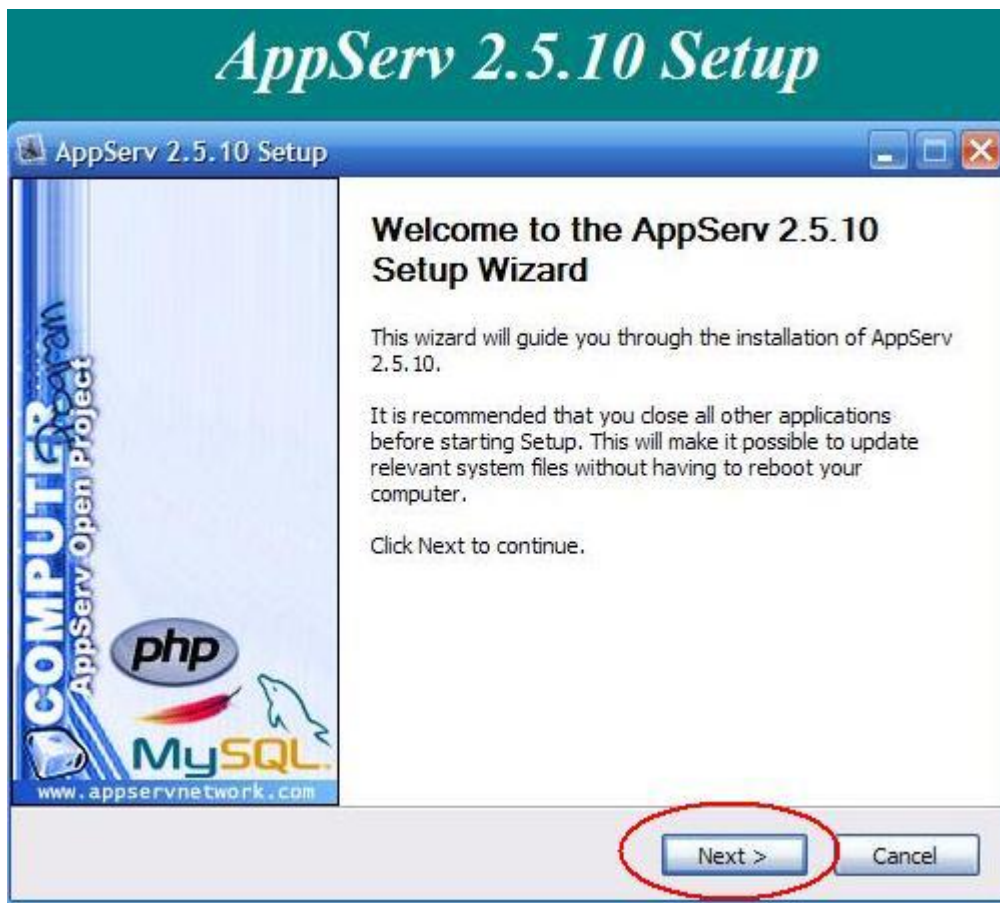
5) When done, click OK for new installation. Click Cancel for program update.



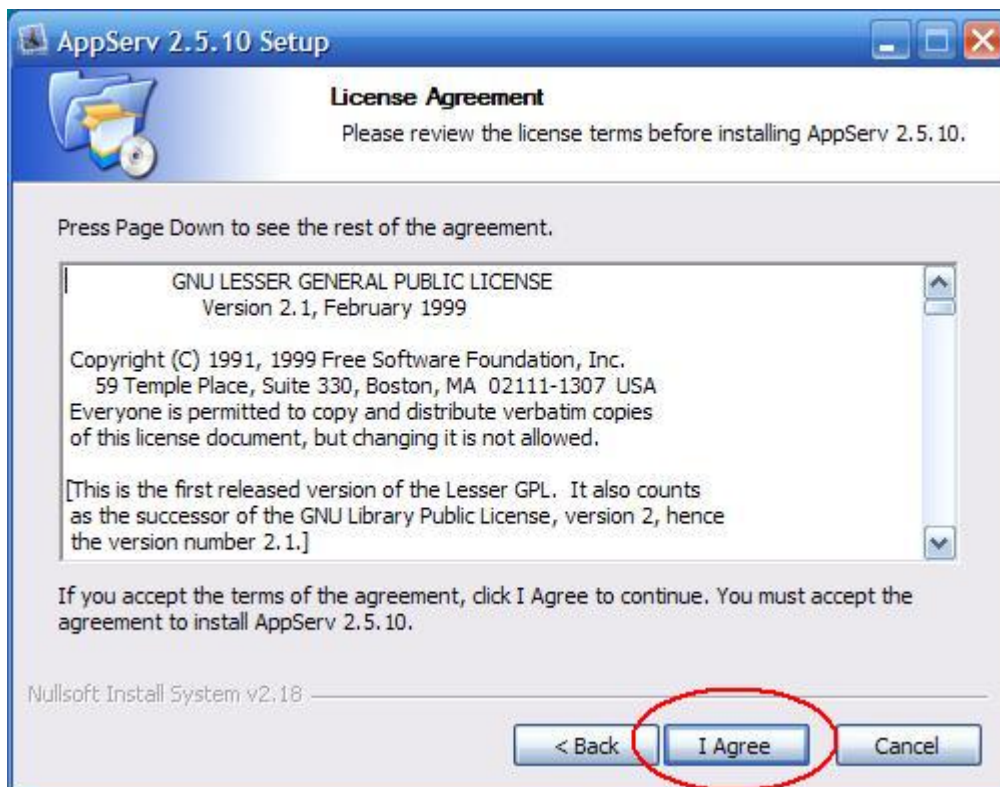
6) If previous installation existed, continue installation will clean out existing setting and media files. Continue?



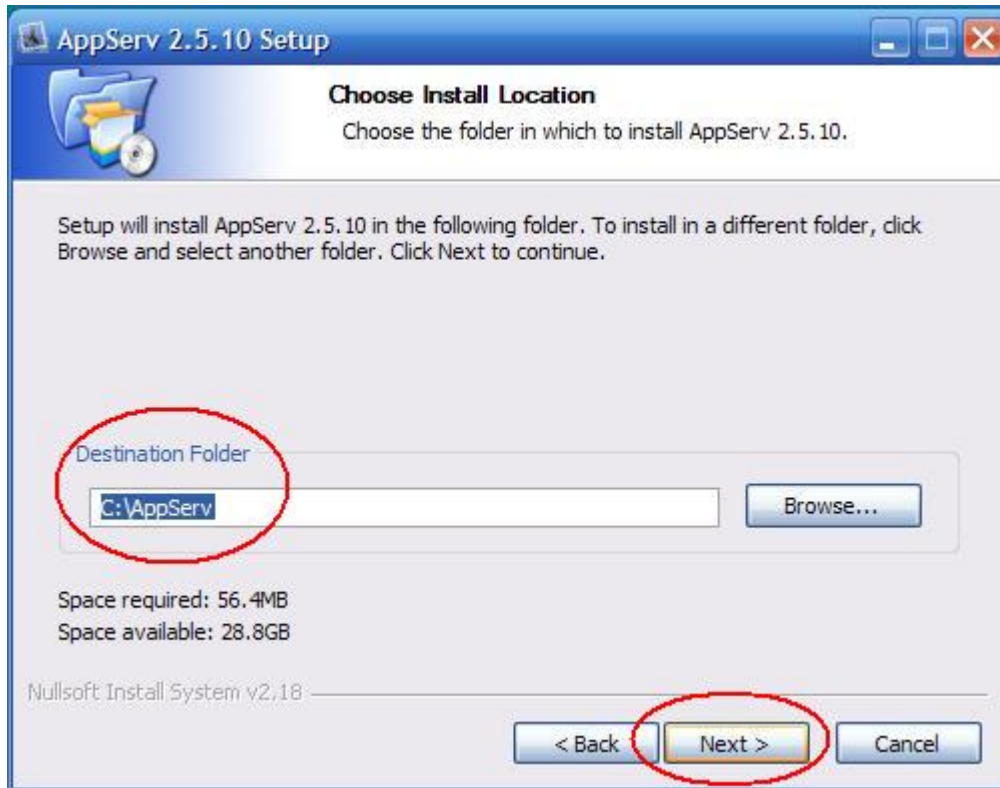
7) Start AppServ 2.5.10 Setup start. Click Next.



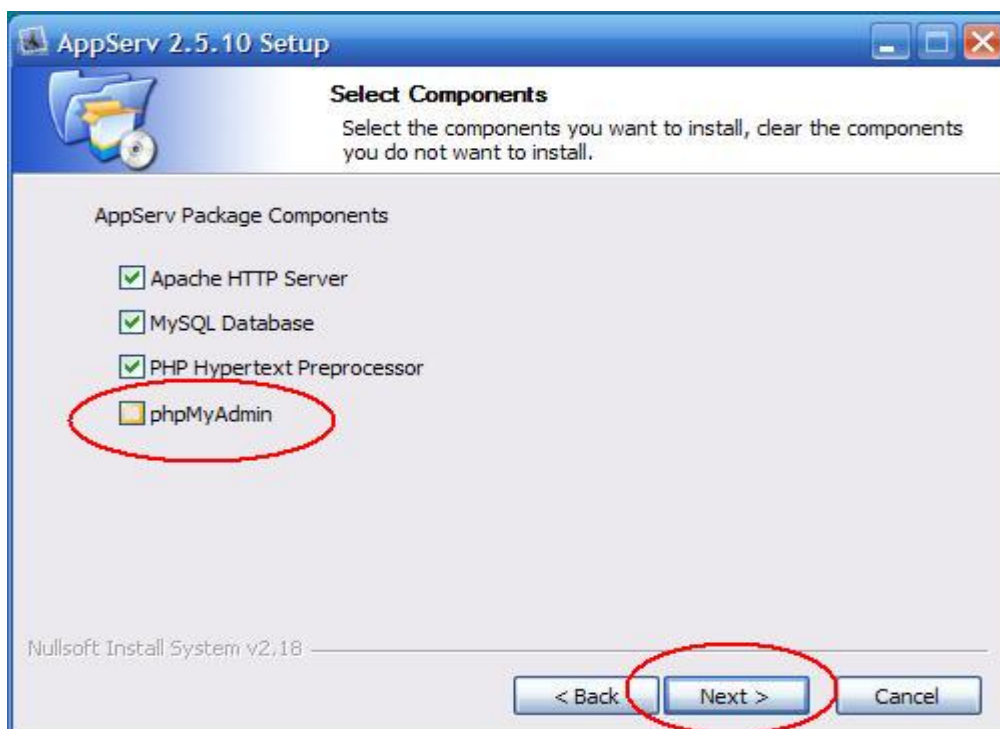
8) Agree the AppServ license



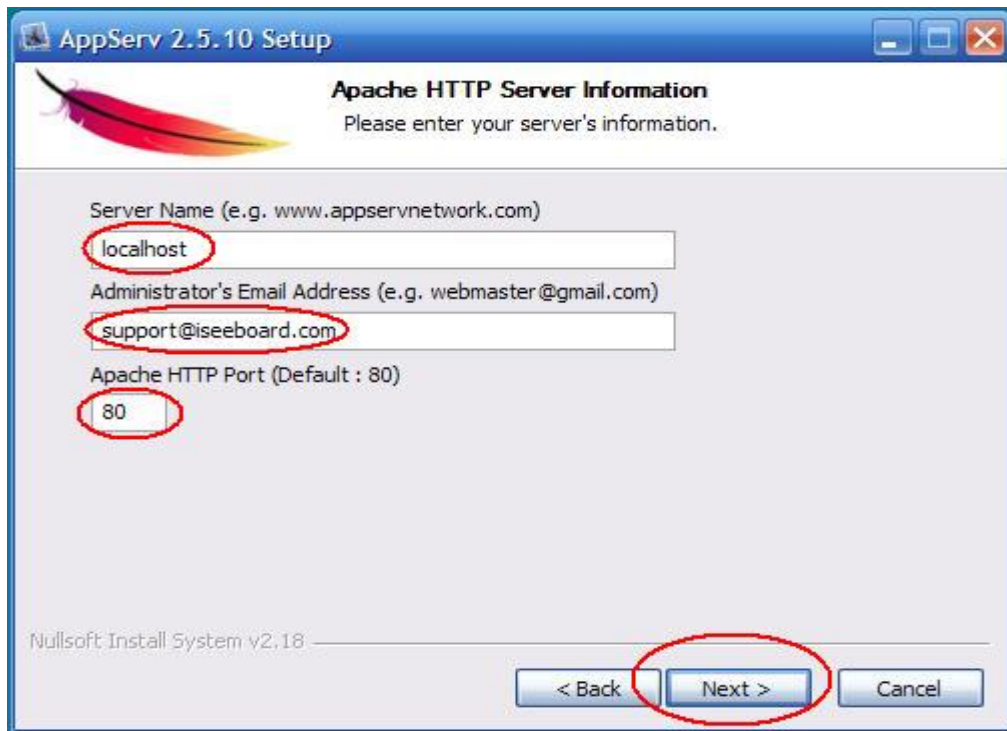
9) Use the default Destination Folder (Do not change this folder name). Click Next



10) Mark Apache HTTP Server, MySQL Database, and PHP Hypertext preprocessor. Unmark phpMyAdmin. Click Next.

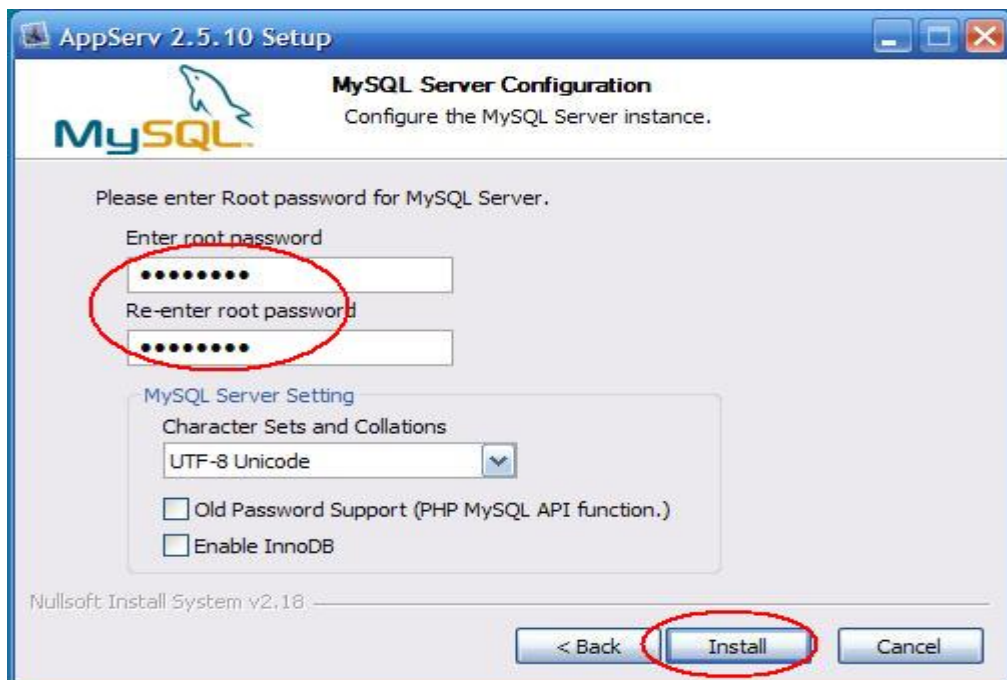


- 11) **Apache HTTP Server:** Type Server Name (*any name. Suggest localhost*) and Email (*any email*). Use default port 80 (**Do not change the port number**). Click Next.



The screenshot shows the 'AppServ 2.5.10 Setup' window with the 'Apache HTTP Server Information' tab selected. The window title is 'AppServ 2.5.10 Setup' and the subtitle is 'Apache HTTP Server Information'. Below the subtitle, it says 'Please enter your server's information.' There are three input fields: 'Server Name (e.g. www.appservnetwork.com)' with 'localhost' entered, 'Administrator's Email Address (e.g. webmaster@gmail.com)' with 'support@iseeboard.com' entered, and 'Apache HTTP Port (Default : 80)' with '80' entered. At the bottom, there are three buttons: '< Back', 'Next >', and 'Cancel'. The 'Next >' button is circled in red. The text 'Nullsoft Install System v2.18' is visible at the bottom left.

- 12) **MySQL Database:** Set Password = 'password' (*This password will be changed later. Suggest to use simple and easy to remember password*). Do not alter 'MySQL Server' other setting. Click Install.

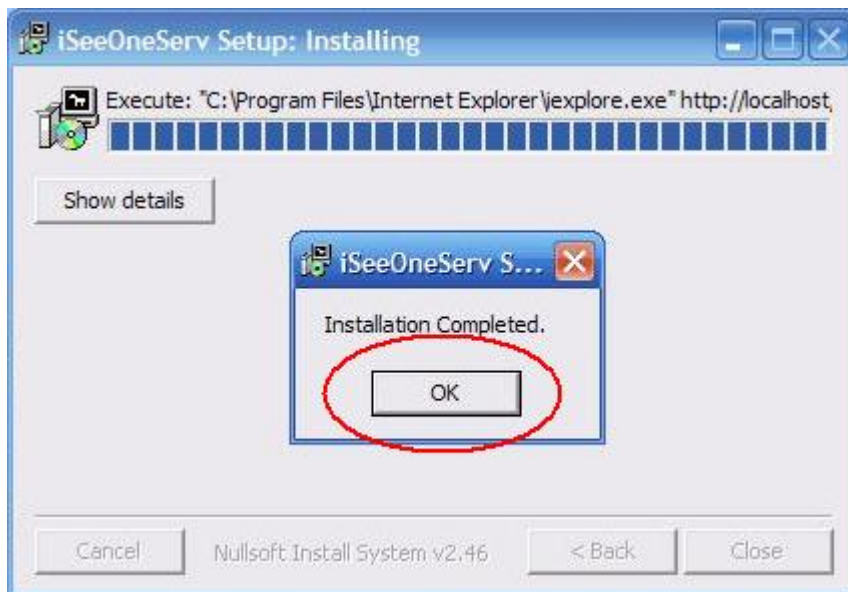


The screenshot shows the 'AppServ 2.5.10 Setup' window with the 'MySQL Server Configuration' tab selected. The window title is 'AppServ 2.5.10 Setup' and the subtitle is 'MySQL Server Configuration'. Below the subtitle, it says 'Configure the MySQL Server instance.' There are two password input fields: 'Enter root password' and 'Re-enter root password', both containing 'password'. Below these is a 'MySQL Server Setting' section with a dropdown menu for 'Character Sets and Collations' set to 'UTF-8 Unicode', and two unchecked checkboxes: 'Old Password Support (PHP MySQL API function.)' and 'Enable InnoDB'. At the bottom, there are three buttons: '< Back', 'Install', and 'Cancel'. The 'Install' button is circled in red. The text 'Nullsoft Install System v2.18' is visible at the bottom left.

- 13) AppServ proceed installation. Upon completed. Mark 'Start Apache' and 'Start MySQL'. Click Finish.



- 14) Click Ok to close Installation Completed Window.



- 15) Some system will fail to bring up iSeeBoard OneServer Installation page, you will see this,



Internet Explorer cannot display the webpage

What you can try:

[Diagnose Connection Problems](#)

[More information](#)

Reboot your computer. When ready, from Start, All Programs, iSeeOneServ, select iSeeOneServ. System will bring you back to up iSeeBoard OneServer Installation page



16) Some system can bring up iSeeBoard OneServer Installation page directly. Enter MySQL password you just set (default is 'password'). Click Install.

iSeeboard one

English

iSeeboard OneServer Installation

MySQL Password:

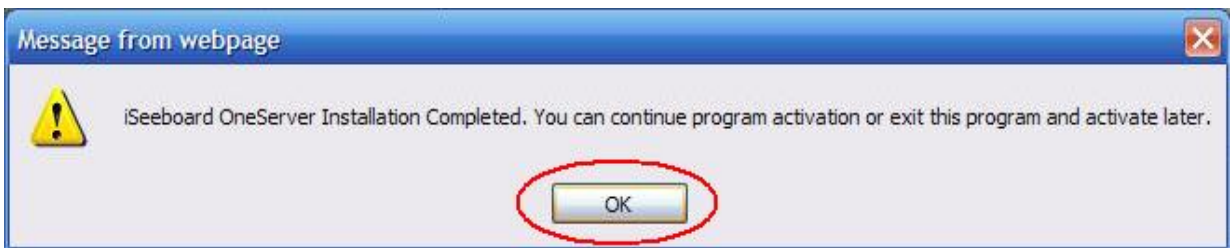
[Install](#) [Exit](#)

**This site best viewed w/ Internet Explorer 7.0 or higher. Video may require newer Media Player, Flash Player, or QuickTime installed.

LeuSys Technologies Inc. Copyright © 2007-2010 All Rights Reserved.

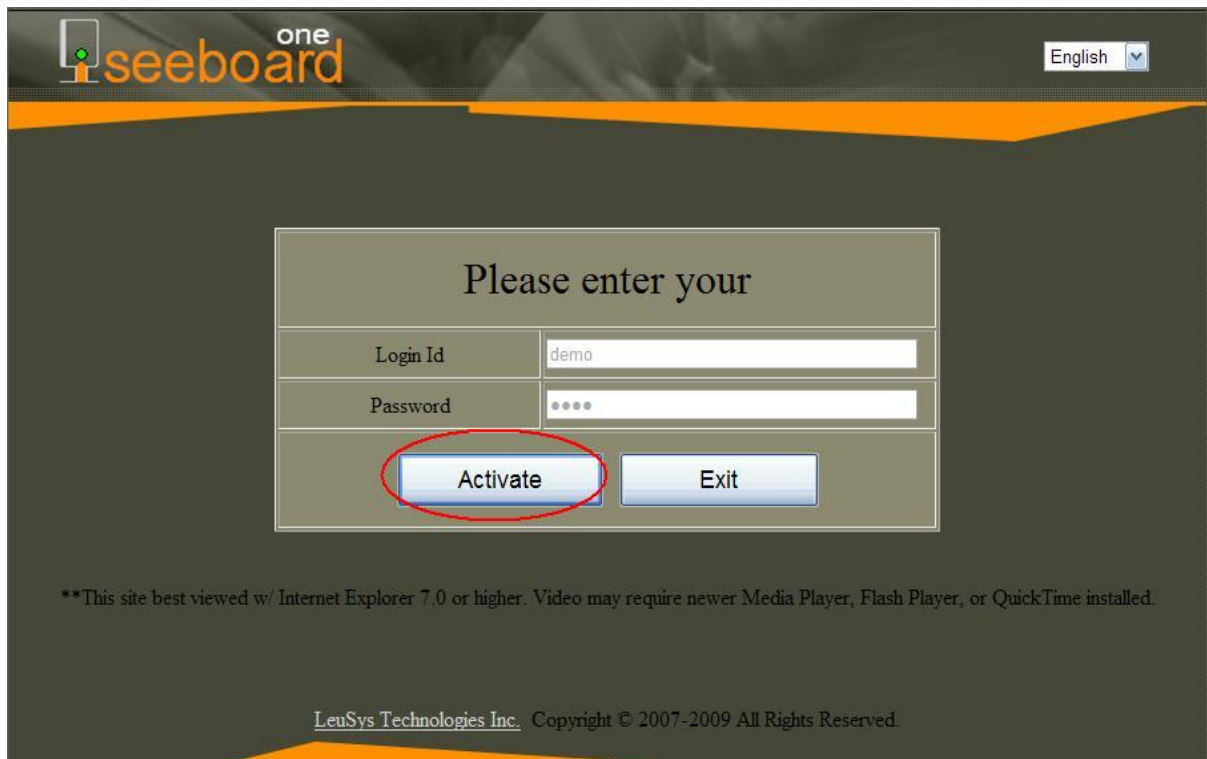
* If you forgot the password, you need to re-start this process again from step 1.

17) iSeeBoard OneServer installation completed.



18) System brings up iSeeBoard activation page. Once activated, program start 30 days trial period.

- For reseller, stop here and click Exit. Let customer activate the software. No need to re-install.
- For user, click Activate to complete the Installation.



***iSeeBoard OneServer installation completed.
Default Login id = **demo**, Password = **demo*****

